

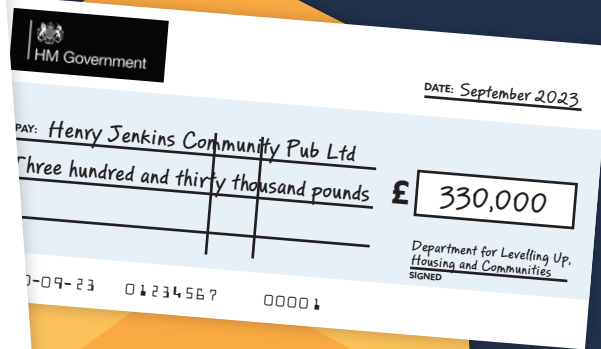
Have you heard the FANTASTIC news?



Dear Resident of Kirkby
Malzeard, Laverton & Dallowgill,

We hope you will be delighted with this gift of £330,000 for you to refurbish and restore your Henry Jenkins pub back into being a vibrant community asset within the heart of your lovely village.

Best regards,
Department for Levelling Up,
Housing and Local
Communities



Yes, after six years of struggle this is not a dream! With this support from the government, local business advisors, and supportive votes from our Parish Council, we are one step closer to saving our pub and protecting our heritage for many years ahead.

An update on the HJCP

The Henry Jenkins Community Pub (HJCP) Ltd is a Community Benefit Society (CBS) regulated by the Financial Conduct Authority and has a local membership of nearly 180 people who have pledged to purchase Community Shares to the value of £230,000. The combined resources of this share money and the government grant of £330,000 brings the purchase and refurbishment of the Henry Jenkins well within our reach.

In spite of all our best efforts, we have been unable to engage in proper negotiations with the owners. Instead, refusing to talk, they have continued to submit various planning applications, allowed the pub to deteriorate, grown a wildlife reserve in the rear car-park and still seem determined to pursue their original intention - to demolish the building entirely and build four houses on the site, prioritising and maximising their own personal profits.

So, we are actively engaging with the new North Yorkshire Council to start the process of a Compulsory Purchase Order (CPO). In cases where a social asset is in danger and under threat, local authorities have the power to purchase it on behalf of the community. This is the action we are requesting. The HJCP, with the government grant and the share money, would then, in turn, seamlessly purchase the asset directly from the local authority.

How a community-owned Henry Jenkins would be run

In our CBS, as many others, it is intended to engage a tenant who will run the business for profit but will pay the CBS a monthly rental for the business and living accommodation. Any 'over-and-above' profits will be ploughed back into the pub itself and/or the local community. No personal profit can be made by any member.

We have no illusions, there is still a lot of work to do - the road ahead will continue to be rocky and steep but we are closer to success now than we have ever been. At our forthcoming **AGM on the 9th October** the members will discuss and decide what we do and how we do it.

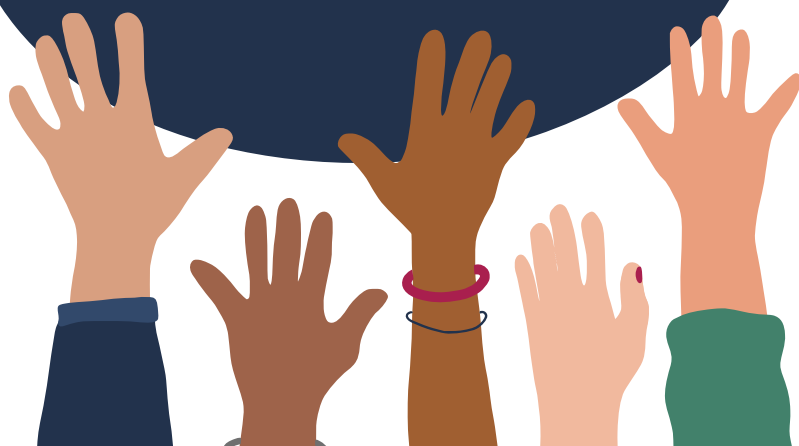
Not yet a member? Join us!

We are actively seeking new members who would like to see a choice of pubs in the village and who share our vision where every business in the village works together for the benefit of all the residents of the parish, old and young, families or 'singletons'. We all saw how the covid pandemic demonstrated that communities are stronger and more resilient the closer they live, work and play together. The number of community pubs is growing month by month - over 160 to date - and though they have suffered from the rise in energy costs and the cost-of-living crisis, still none of them have failed.

Community pubs are unique in the sense that they actively seek the view of local people in how they would like the pub to run and what services they would like to provide, so local people have a say. At the very start of our campaign in 2017/18 a large number of parishioners completed a questionnaire on what they would like to see included in any restoration. Everyone will have another chance to get involved when a new questionnaire is circulated before any refurbishment plans are finalised. Grab this chance to have a say in how your local is run!

You become a member by purchasing at least one share in the CBS. The cost of one share is £250 and the maximum number any one person can hold is 120. Shares cannot be transferred or sold on (except back to the CBS) and never increase or drop in value. Members can attend meetings and discussions and vote on how the CBS conducts its business, and all members have an equal say no matter how many shares they hold.

If you would like to join us or just want additional info, please contact us via:
HJCPLtd@gmail.com or by voice/text on **07860 396170**.



PLEASE TAKE ACTION

New planning application

We need to defeat the latest planning application by the owners to convert the ramshackle outbuildings and piggeries to the rear of the Henry Jenkins into a holiday cottage. This is obviously just a spoiling tactic designed to deter our attempts to save the pub, but we need to demonstrate to the North Yorkshire planners and the Council as a whole that we are united in our aim to save our historic landmark pub by objecting to these plans in great numbers.

You can access the NYC planning portal via this internet link:

<https://uniformonline.harrogate.gov.uk>.

In the search box enter the reference number **ZC23/03121/FUL** which will take you to the planning application. You will need to log in to make a comment.

Any individual objection to this application is one additional vote towards making our village a more attractive and sustainable place to live in. For us to succeed, it is essential that as many people as possible object. A larger volume of objections from our community will help make a CPO much more likely.

We are working hard for the parish but we cannot succeed without your help and support.

This massive investment in our village can only be used for the Henry Jenkins – we either use it or lose it!

Let's all make Kirkby Malzeard an even better place to live.